

DOTVIEW

DATA CONTROL AND MANAGEMENT SYSTEM

DOTEXA VIEWER

DATA CONTROL AND MANAGEMENT SYSTEM

ALL THE INFORMATION YOU NEED AT YOUR FINGERTIPS

DOTVIEW is a software package developed in MS Windows that provides a consistent process control and data management of the production plant. It is based on an integrated data acquisition system which can connect the DOTEKO gravimetric units to a personal computer.

Supported by graphics, alarm trends, consumption reports, and statistical parameters concerning the behavior of the production, make it possible to optimize global efficiency leading to savings in terms of material and supporting the achievement of higher product quality.

Main features:

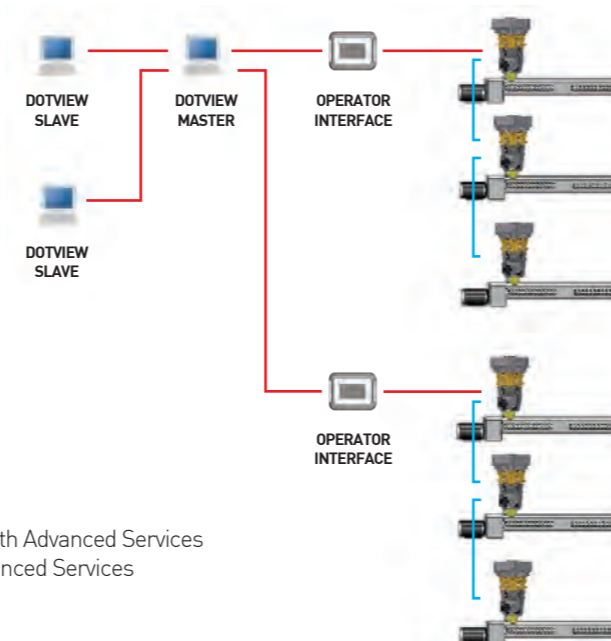
- Management of databases for process parameter storage. Recipes storing, upgrade and download on-the-fly.
- Raw material manager: stored with numerical code and description.
- Blending recipes manager: to create, modify and store blending recipes with numerical code and description.
- Melting profiles manager: to create, modify and store melting profiles with numerical code and description.
- Extrusion recipes manager: to create, modify and store extrusion recipes with numerical code and description.
- End product manager: to create, modify coded end products. Each product code is assigned to a blending, extrusion and melting temperature recipes.
- Order manager: to create, modify a list of job orders containing useful data for identifying and tracking each order.
- Each order is assigned a product code.
- Recording of the quantity of raw material used in the process.
- Totalling by ingredient.
- Recording of alarm events.
- Statistical process analysis (SPC) for blending and extrusion data.
- Data exporting for further analysis by user programs (Lotus, Excel).
- Inventory report viewing and printout: sorting by product code, job order, recipe and date.
- Quality report viewing and printout: sorting by job order.
- Available in Italian, English, French, German, Portuguese, Spanish and Swedish.

COMPLETE CONTROL FROM ANYWHERE

The extrusion lines can even be controlled simultaneously from more than one workstation; the PC communicates with the extrusion lines using the operator panels as a communication bridge.

an Ethernet network is required to link the PC where Dotview is installed and the operator panels.

It is possible to connect up to 20 extrusion lines.



HARDWARE REQUIREMENTS

System Memory:

- Minimum 512 MB for SQL Server Express with Tools and SQL Server Express with Advanced Services
- 4GB for Reporting Services which is installed with SQL Server Express with Advanced Services

Hard Disk:

- 2.2GB of free disk space

Processor:

- **X86**: Pentium III-compatible processor of faster (Processor Speed - 1.0 GHz or higher)
- **X864**: Minimum AMD Opteron, AMD Athlon 64, Intel Xeon with Intel EM64T support, Intel Pentium IV with EM64T support (Processor Speed - 1.0 GHz or higher)
- **IA64**: Itanium processor or higher (Processor Speed - 1.0 GHz or higher)

EXTRUSION DATA

- Load, save, send restore and print a recipe
- Shows Recipe ID, description and status

Film:

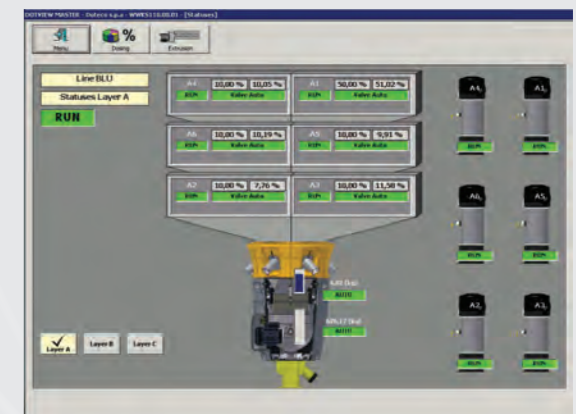
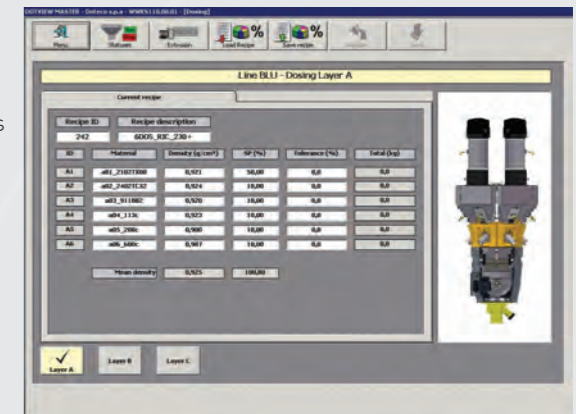
- Bubble type: indicates whether film production is relative to a tube or sheets
- Take off status: shows if the take off is in manual or auto
- Line speed (set point and present value)
- Film thickness (set point and present value)
- Grammage (set point and present value)

Extrusion:

- Gross output (set point and present value)
- Film density (set point)
- Layflat tube (set point and present value)
- Trimmed layflat (set point)
- Edge trim present value (%)
- Net output (set point and present value)

Layer:

- Thickness present value
- Extruder status: shows if it is in manual or auto
- Throughput (set point and present value)
- Layer % (set point and present value)
- Layer thickness (set point and present value)
- Effective extruder speed



DOSING

- Shows Recipe ID, description and status
- Materials description, density, dosing set point and accepted tolerance
- Total consumption for each material since the last changeover
- Mean density of the ingredients
- Set point sum of the ingredients set point (%)

Layer:

- Dosing status for each feeding station
- Weight bin gate: gate status and residual weight (batch blenders)
- Mixer: motor status and residual weight (batch blenders)
- Mixer gate: status of the mixer gate below the mixer (when present)

Feeder:

- Shows ID, blend ratio (set point and present value) status of the feeder and related dosing valve (stop, run or auto)
- Residual weight for each hopper (continuous blenders and gravimetric hopper)
- Refill valve status (continuous blenders and gravimetric hopper)

Loaders:

- Shows ID and status (stop, run or auto) for each loader



HISTORY

Alarms:

- Possibility to filter by date and time (from...to), line, type of alarm and layer
- Possibility to sort (AZ...ZA) and print the list of alarms
- Description, type, line, date and time, layer and status of each alarm displayed

Consumptions:

- Possibility to filter by date and time (from...to), line, order and product
- Aggregation by type (time, shift, production)
- Details by line, material and quantity

Production:

- Possibility to filter by date and time (from...to), line, order and product
- Aggregation by type (time, shift, production)
- List by date (start\end), line, order, product, customer and reason of start\stop
- Details including description, set point, mean, minimum, maximum values reached, 2 sigma (standard deviation), quantity and samples

TRENDS AND REPORTING

- Real time monitor of up to 10 variables simultaneously in a time interval selectable from 30 minutes to 24 hours.
- Inventory report viewing and printing: sorting by product code, job order, recipe and date.
- Quality report viewing and printing: sorting by job order.



DOTEKO SPA

Via E. Mattei, 30
41037 San Martino Spino Modena
ITALY
Phone +39.0535.31653
Fax +39.0535.31727
E-mail doteco@doteco.com
www.doteco.com

DOTEKO LATINO AMÉRICA

Rua Izonzo, 643
Ipiranga 04249-000 São Paulo
BRASIL
Phone +55.11.2948.1454
Fax +55.11.2351.5520
E-mail doteco@doteco.com
www.doteco.com

DOTEKO USA

2450 Abutment Road, Suite 7
Dalton, GA 30721
USA
Phone +1.706.529.8787
Fax +1.706.529.1898
E-mail doteco@doteco.com
www.doteco.com